

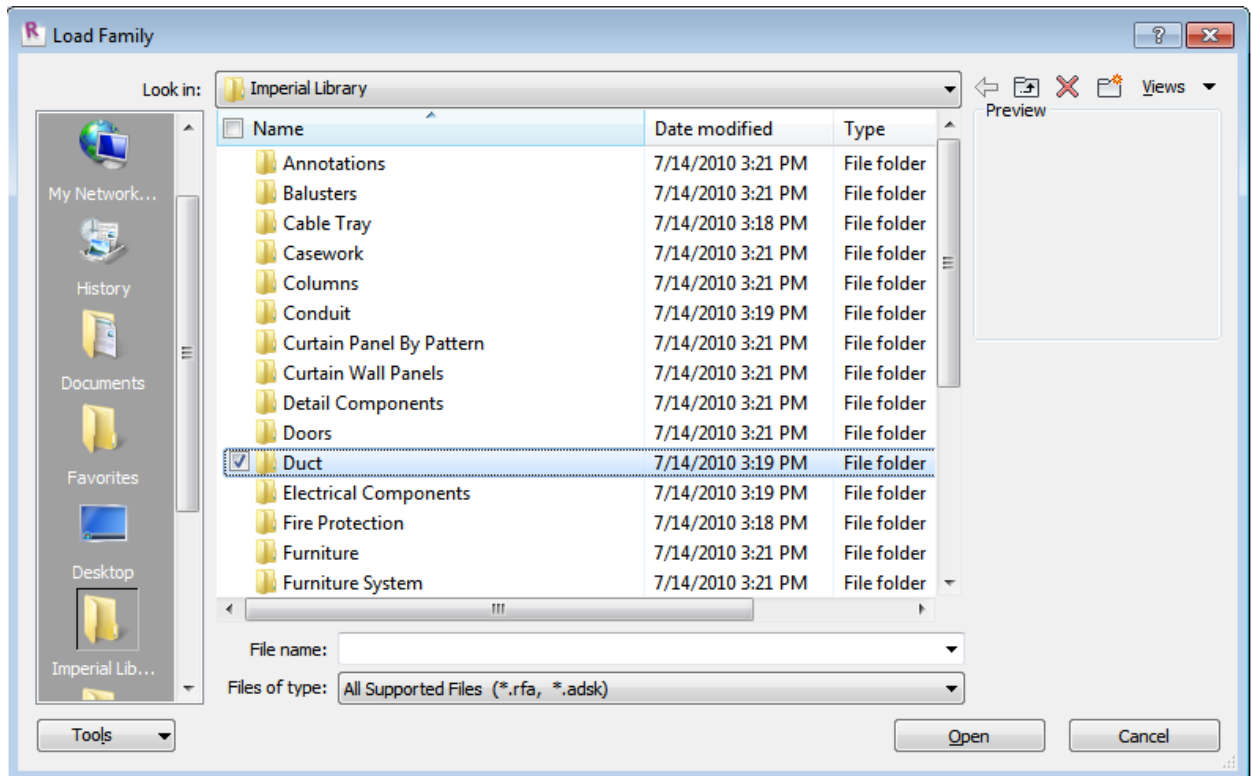
BIM Wiki two

How to set up the correct defaults on Duct and Pipe types

Description: This will walk you through the steps necessary to set up the correct defaults on Duct and Pipe types

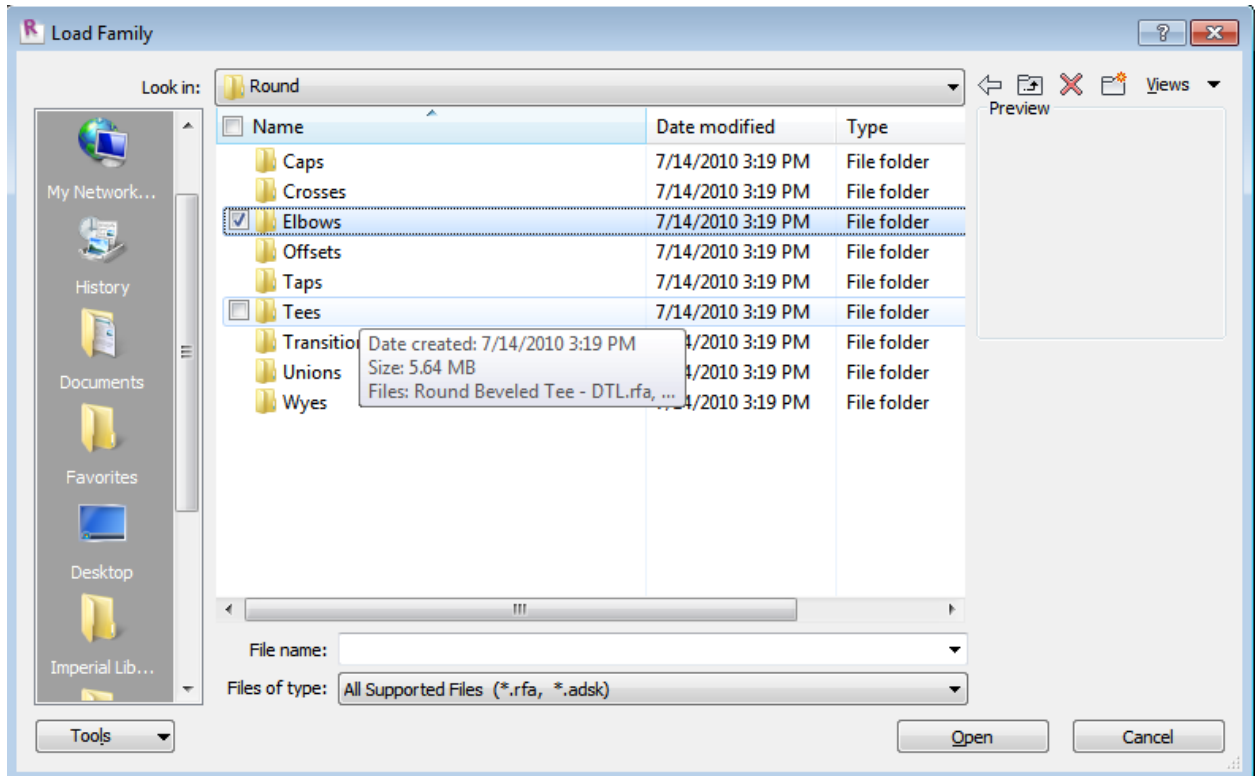
Step One: Makes sure you have all the needed fittings loaded into the project. Sometimes they are already loaded and others times they aren't.

- A) To load them manually go to the "Insert" tab and click "Load Family"
- B) This will open the "Imperial Library." Select either Ducts or Pipes, steps are the same of both.

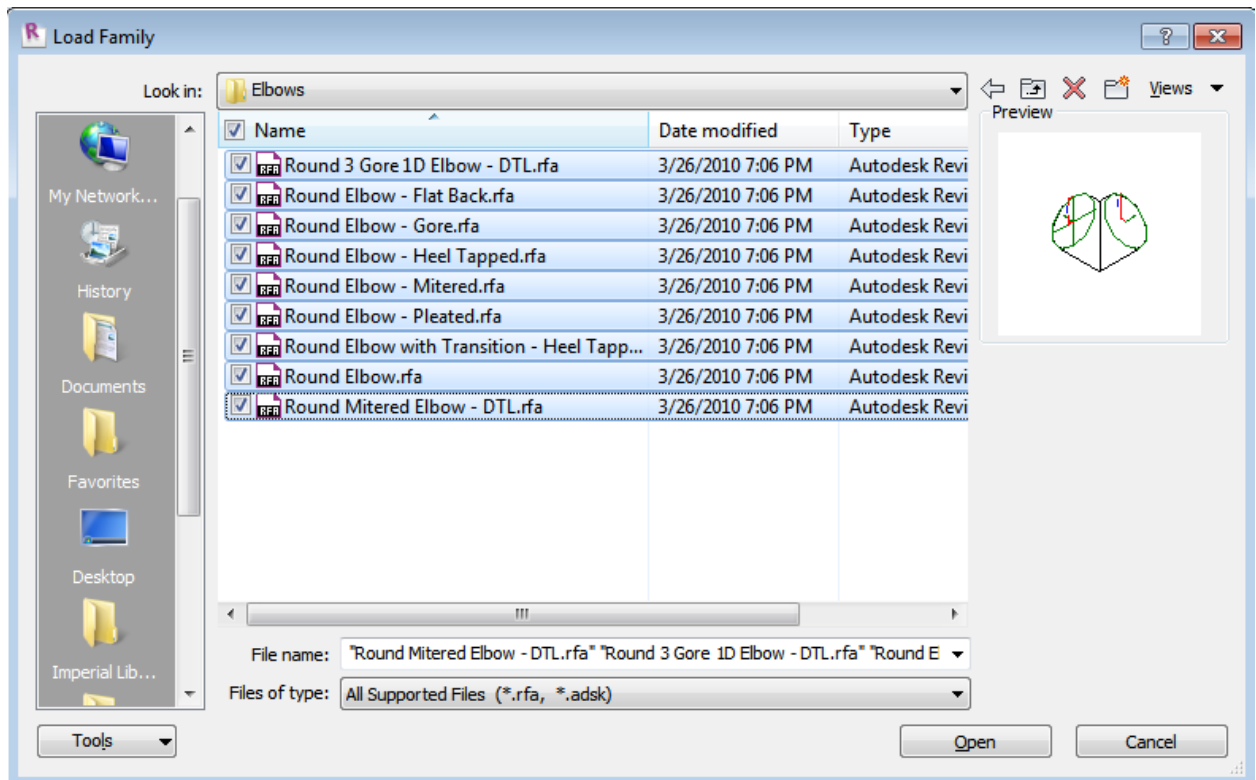


- C) In Ducts, select "Fittings"
- D) Next select the duct type ie. Round

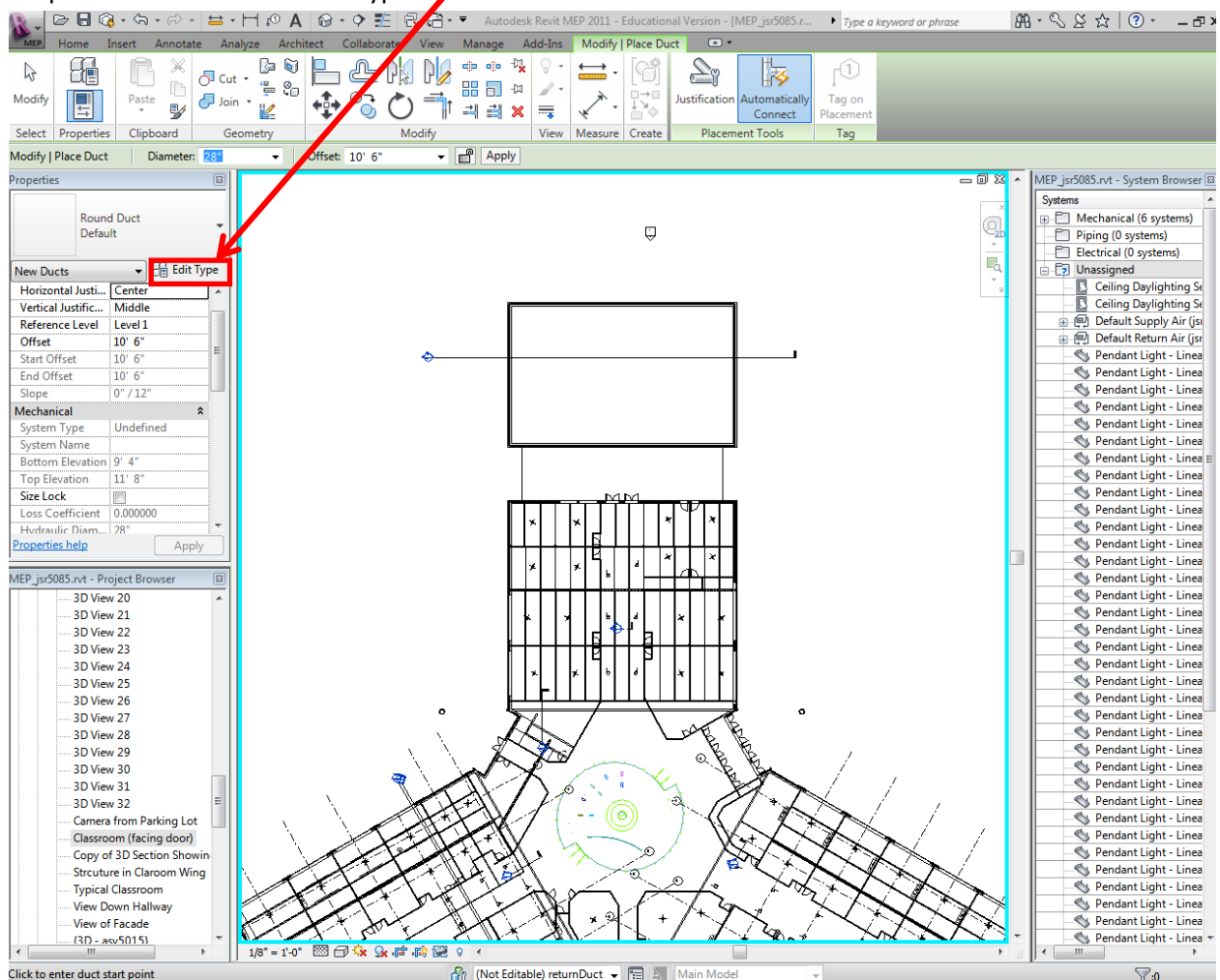
- E) That brings you to this window. You will have to come back here for each of the following folders.



- F) I am in the Elbows Folder now. I will select all of the elbows so I have them all and hit open.



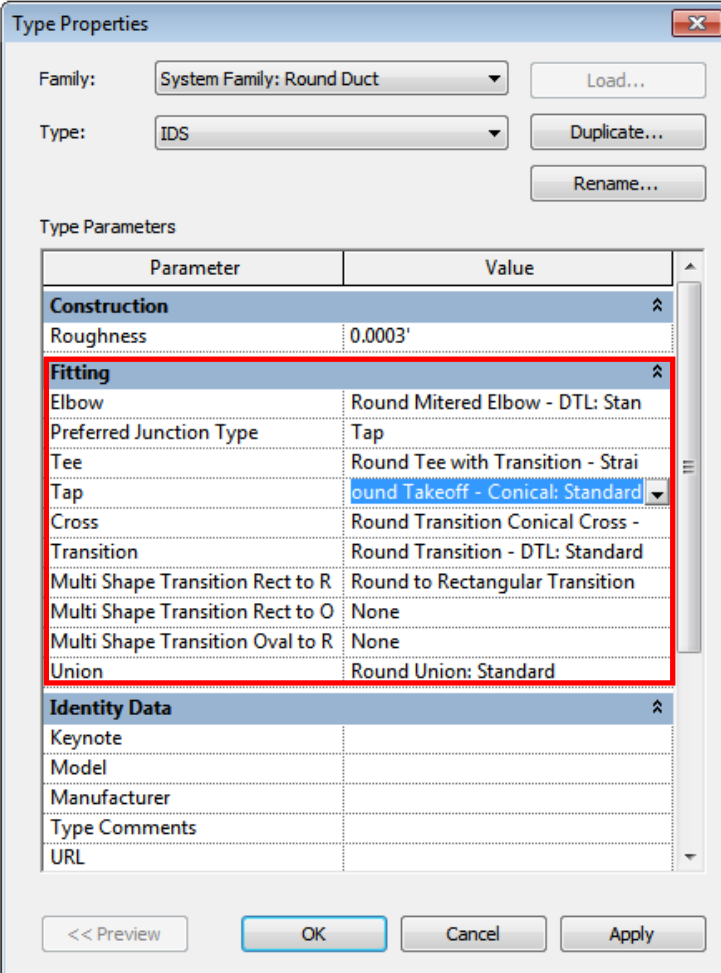
Step 2: Once each of these different fitting types is load go the “Home” tab and select “Duct.” In the Properties Window click Edit Type.



As you can see the first duct type is the Default.

Step 3: Click Duplicate and Rename the type.

Step 4: Under the “Fitting” section apply the defaults that you would like for your project. These fittings are the ones we loaded earlier. Each fitting (elbow, tee, tap, etc) needs to have a component type selected. Otherwise certain connections won’t work. When you are finished, click OK.



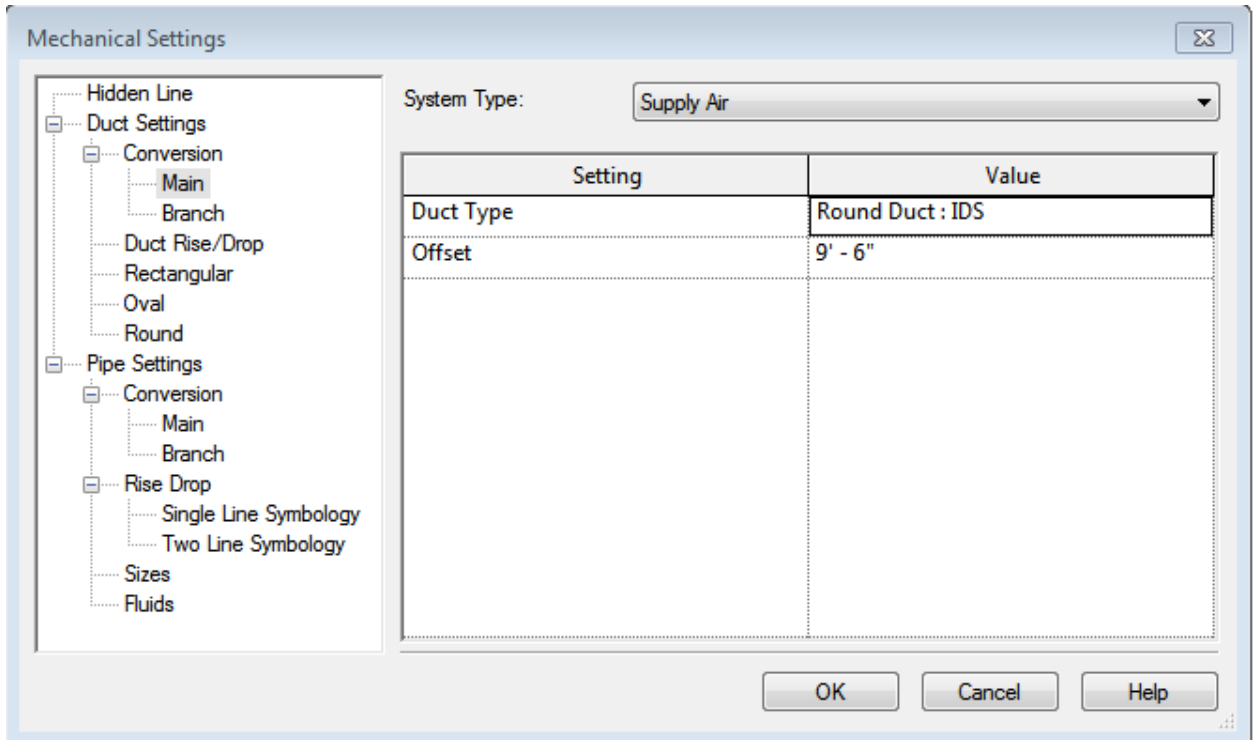
The 'Type Properties' dialog box is shown for the 'System Family: Round Duct'. The 'Type' is set to 'IDS'. The 'Type Parameters' table is as follows:

Parameter	Value
Construction	
Roughness	0.0003'
Fitting	
Elbow	Round Mitered Elbow - DTL: Stan
Preferred Junction Type	Tap
Tee	Round Tee with Transition - Strai
Tap	Round Takeoff - Conical: Standard
Cross	Round Transition Conical Cross -
Transition	Round Transition - DTL: Standard
Multi Shape Transition Rect to R	Round to Rectangular Transition
Multi Shape Transition Rect to O	None
Multi Shape Transition Oval to R	None
Union	Round Union: Standard
Identity Data	
Keynote	
Model	
Manufacturer	
Type Comments	
URL	

At the bottom of the dialog are buttons for '<< Preview', 'OK', 'Cancel', and 'Apply'.

Step 5: Go to the “Manage” tab and click MEP Settings and select mechanical.

Step 6: Here we will apply the defaults. Under duct click main and set the type to the one we just created and apply an offset. (Do the same for Branch and Pipe)



Step 7: You are now ready to draw duct and it should automatically make the connections for you.